

Notes on *Netomocera* Bouč. with description of new species (Hym., Chalcidoidea, Pteromalidae)

By KARL-JOHAN HEDQVIST

Swedish Natural Science Research Council
c/o Dept. of Ent., Swedish Museum of Natural History
104 05 Stockholm 50

The author has treated (1969) Diparini as a tribe but now after study of *Netomocera* Bouč., *Lelaps* Hal., and some new related genera it seems better to give this group of genera the rank of a subfamily. According to this it seems adequate to divide it in three tribes:

Subfamily *Diparinae*
Tribe *Diparini*
,, *Lelapini*
,, *Netomocerini*

Tribe *Netomocerini*

BOUČEK (1955) described a new genus *Netomocera* with 1 species; 3 new species are added below.

Netomocerini can be characterized as follows: Squat species with large head and eyes. Mandibles with 3+3 teeth. Clypeus with straight or a little arched anterior margin, labrum is free. Antennae with formula, ♀ 11173 and ♂ 11191, inserted just above or on a level with anterior margin of eyes. In female with antennae more or less clubshaped, in male elongated. Notauli complete. Scutellum with frenum. Postspiracular sclerite very small. Propodeum rugose to areolate without nucha. Petiole as long as broad. Gaster with 1st tergite longer than the other tergites together. Hind tibia with two spurs. Fore wing hairy with only one narrow speculum, marginal vein longer than postmarginal vein (3:1). Stigmal vein equal to or a little shorter than postmarginal vein.

Only one genus known so far; with species in both the Palearctic and Ethiopian regions.

Key to the species of *Netomocera* Bouč.

♀♀

1. Fore wing with two fuscous spots *N. setifera* Bouč. 1955
- Fore wing without fuscous spots 2.

2. Eye longer than scape (1,3:1). Antennae inserted distinct above a level with anterior margin of eyes *N. alboscopus* sp. n.
 - Eye as long as scape. Antennae inserted just on a level with anterior margin of eyes *N. africana* sp. n.

♂♂

1. Malar space as long as the breadth of an eye 2.
 - Malar space shorter than the breadth of an eye *N. africana* sp. n.
 2. Collum as long as mesoscutum. Predominantly reddish brown with stramineous legs *N. rufa* sp. n.
 - Collum distinctly shorter than mesoscutum. Black with dark brown legs
 *N. setifera* Bouč. 1955

Netomocera alboscopus sp. n.

♀. Head, thorax, propodeum and petiole black. Gaster, all coxae and femora, mandibles, tegulae and antennal clava dark brown. Scape, all tibiae (except hind tibiae) and pedicel, 1st funicle joint and tarsi pale yellowish white; hind tibiae pale yellowish white with brown infuscation. 2nd funicle — 6th funicle joints successively darker brown. Fore wing with yellowish veins.

Head large and a little wider than thorax. Eyes large (fig. 2 C). Clypeus with anterior margin arched. Antennae, 11173, inserted distinct above a level with anterior margin of eyes. Funicle+clava clubshaped (fig. 1 E). Notauli distinct. Postspiracular sclerite very small. Head and thorax fine reticulated. Behind frenum of scutellum fine carinated. Propodeum with a median carina and areolated. Spiracles small and circular, nucha short and callus with few scattered hairs. Petiole as long as broad with 5 dorsal carinae. Gaster long-oval with 1st tergite longer than the rest together. One seta of pygostyle longer than the other. Hind tibia with 1 spur. Fore wing with a narrow speculum, subcostal vein as long as marginal vein, postmarginal vein longer than stigma.

♂. Unknown.

Length: 2,7 mm.

Holotype: in coll mea. Congo.

Netomocera africana sp. n.

♀. Head, thorax and propodeum black. Gaster, all coxae (except hind coxae) and femora and mandibles brown. Hind coxae pale yellowish white. Antenna: scape, pedicel, ring joint and funicle joints 1—3 stramineous, scape basally pale, the rest of antenna dark brown. Legs: fore and mid coxae and extreme base of hind coxae, all femora and all claws brown, all tibiae and tarsi, hind tronchanteres and basal part of femora stramineous. Hind coxae except extreme base pale yellowish white. Wings with yellowish tint and veins stramineous.

Head (fig. 2 A) large, wider than thorax. Antennae (fig. 1 B) 11173, inserted just at a level with anterior margin of eyes. Clypeus straight. Mandibles with 3+3 teeth. Eyes large, malar space as long as 2/3 of the breadth

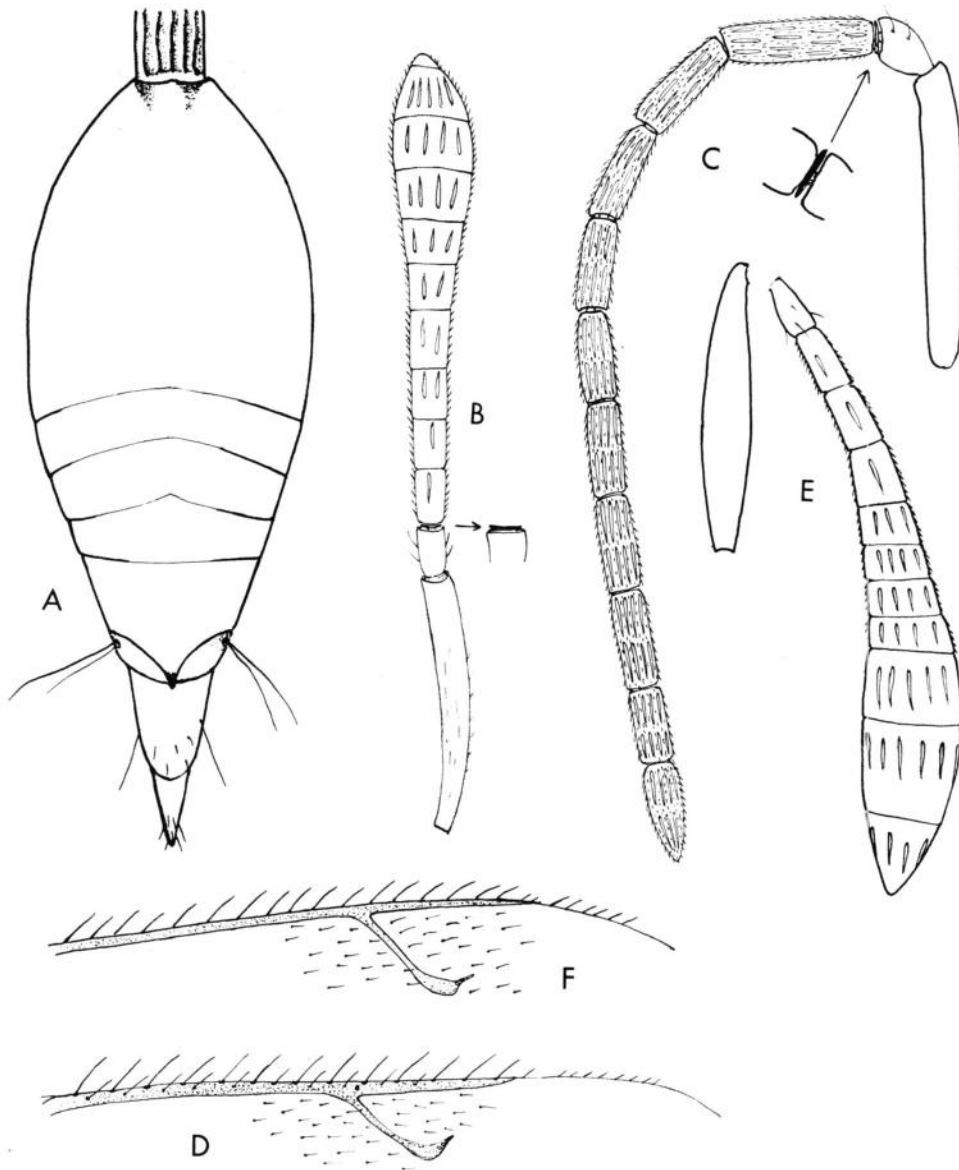


Fig. 1. A. *Netomocera africana* sp. n. ♀ gaster. B. *N. africana* sp. n. Antenna (♀). C. *N. africana* sp. n. Antenna (♂). D. *N. africana* sp. n. Stigmal and postmarginal veins. E. *N. alboscapus* sp. n. Antenna (♀). F. *N. rufa* sp. n. Stigmal and postmarginal veins.

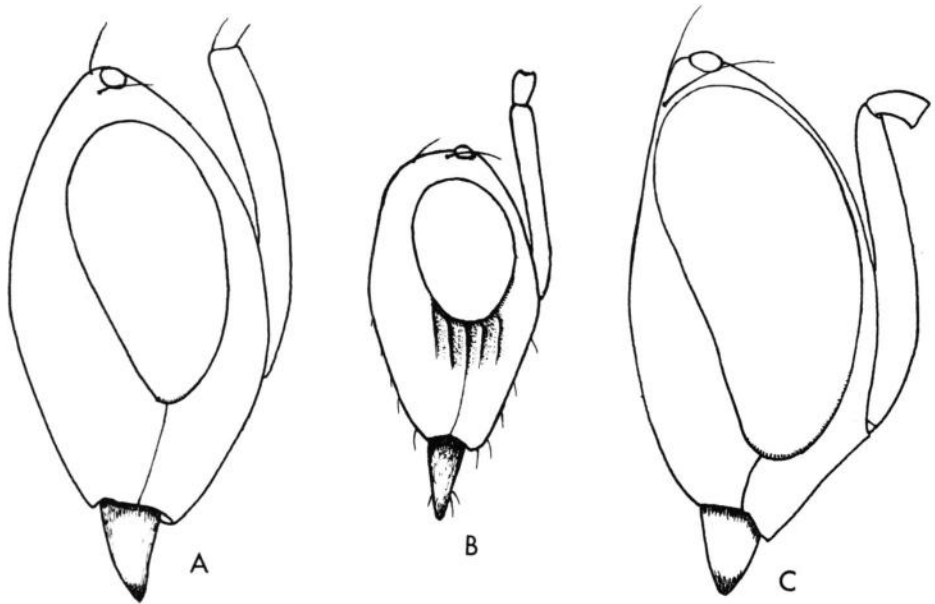


Fig. 2. A, *Netomocera africana* sp. n. Head in lateral view. B, *N. rufa* sp. n. Head in lateral view. C, *N. alboscapus* sp. n. Head in lateral view.

of an eye. Pronotum and mesoscutum short. Notauli complete. Postspiracular sclerite very small. Scutellum with frenum, behind frenum longitudinally striated. Propodeum with rugose puncture and very short nucha. Petiole with few longitudinal carinae. Gaster (fig. 1 A) with long 1st segment. Legs strong with two spurs of hind tibia. Fore wing hairy with a narrow speculum. Strong bristles of subcostal vein and costal cell narrow. Postmarginal vein a little longer than stigmal vein. (Fig. 1 D).

♂. Similar to female but antennae (fig. 1 C), 1192, inserted just above a level with anterior margin of eyes. Clypeus with anterior margin a little arched. 1st segment of gaster large.

Black with scape, pedicel, 1st funicle joint, knees, tibia and tarsi stramineous; femora and antenna dark brown. Fore wing with yellow tint, veins stramineous. Tegulae brown.

Length: ♀ 3,1—3,2 mm, ♂ 3,0—4,0 mm.

Holotype: In the collection of British Museum (Nat. Hist.), London.

South Africa, Pondoland, Port St. John, 6—25 febr. 1924, leg. R. E. Turner.

Paratypes: 1 ♀ + 3 ♂♂.

2 ♂ in the collection of British Museum (Nat. Hist.), London.

1 ♂ South Africa, Pondoland, Port St. John, 6—25 Febr. 1924, leg. R. E. Turner.

1 ♂ South Africa, Pondoland, Port St. John, Dec. 1923, Leg. R. E. Turner.

- 1 ♀. In coll.meae South Africa, Pondoland, Port St. John, 6—25
1924, leg. R. E. Turner.
1 ♂. In coll.meae. South Africa, Pondoland, Port St. John, Dec.
1923, leg. R. E. Turner.

Netomocera rufa sp. n.

♂. Reddish brown; axillae, gaster, propodeum and antenna (except scape and pedicel) dark brown. Scape, pedicel and all legs stramineous. Fore wing with pale yellow veins.

Similar to the male of *N. africana* sp. n. but malar space as long as the breadth of an eye (see the key) (fig. 1 F and 2 B).

♀. Unknown.

Length: ♂ 1,9 mm.

Holotype: In the collection of British Museum (Nat. Hist.)

South Africa, Pondoland, Port St. John, July 10—31, 1923, leg.
R. E. Turner.

References

- BOUČEK, Z.: 1954. Chalcidologické Poznámky I, Pteromalidae, Torymidae, Eurytomidae, Chalcididae (Hymenoptera). — Acta Ent. Nat. Praeae. 29, 49—80.
GRAHAM, M. W. R. de V.: 1969. The Pteromalidae of Northwestern Europe (Hymenoptera, Chalcidoidea). — Bull. British Mus. (Nat. Hist.) Suppl. 16, 1—908.
PECK, O. et al.: 1964. Keys to the Chalcidoidea of Czechoslovakia (Insecta. Hymenoptera). — Mem. Ent. Soc. Canada, no 34, 1—120.